

# Suite, Op. 34

for flute and piano

Charles-Marie

Widor

(1844-1937)

## I.

Moderato

7

12

19

25

33

39

43

*< sf*

*p*

*< sf*

*pp*

*mf*

*p*

*cresc.*

*< sf > f*

*< sf*

*pp*

*mf*

*f*

*< sf*

*pp*

*pp*

51 *cresc.* *ff* *p*

60 *p* *f* *cresc.* *accelerando poco a poco* *tr*

68 *Vivo* *ff* *p* *cresc.*

73 *f* *riten.* *a tempo* *p*

77 *< sf* *pp* 3

82 *cresc.* *< sf > f*

89 *< sf* *pp*

94 *mf* *sf* *cresc.*

101 *animato* *sf* *sf* *a tempo* *pp*

108 *accelerando* *cresc.* *ff* *Vivo* *p*

115 *cresc.* *f* *3 rubato* *3* *3* *3*

120 *dim.* *3* *p*

## II. Scherzo

Allegro vivace (♩ = 104)

*p*

10

19 *sf*

25 *f*

30

35

40

45 *pp*

48 *p*

60 *pp* *rit.* *a tempo* *p*

Detailed description: This page contains the musical notation for measures 25 through 60 of a piece by Widor. The music is written on a single staff in treble clef with a key signature of one sharp (F#). Measures 25-34 consist of continuous eighth-note runs, mostly ascending, with some descending passages. Measure 35 continues the eighth-note pattern. Measures 40-44 feature more complex runs with some accidentals. Measure 45 begins a new section marked *pp* (pianissimo), with a first ending bracket over measures 45-47. Measure 48 starts a second section marked *p* (piano), featuring a half-note melody. Measures 59-60 return to the *pp* dynamic, with a *rit.* (ritardando) marking at measure 59 and a *a tempo* marking at measure 60, which then continues with a *p* (piano) dynamic.

73 *mf*

83 *rit. poco* *a tempo* *p*

93 *p*

105

116 *f* *f*

122

128

134

Detailed description: This page contains the musical notation for measures 73 through 134 of a piece by Maurice Ravel, from his Suite for Violin and Piano, Op. 34. The music is written for a single melodic line in treble clef with a key signature of one sharp (F#). The notation includes various musical symbols such as slurs, ties, and dynamic markings. The piece features a mix of melodic lines and dense, rapid sixteenth-note passages. The dynamics range from piano (p) to fortissimo (f). The tempo changes from a slower, more expressive section to a faster, more rhythmic section around measure 83.

140 *pp*

146

152

158

163

168

### III. Romance

Andantino

*p sostenuto*

6 *cresc.* *p*

Musical notation for Example 6-10, showing a melodic line on a treble clef staff. The key signature has three flats (B-flat, E-flat, A-flat). The melody consists of several measures, including a half note, quarter notes, eighth notes, and a final whole rest.

17

17

23

*f* *p*

28

*p*

*p*

34

39

*sf* *cresc.* *f* *rit.*

49 *a piacere* *rapido* *accelerando molto* *cresc.*

51 *f* *animato*

54 *a piacere* *Vivo*

58 *p* *Più lento* *a piacere*

62 *veloce* *a tempo* *pp*

64 *p*

69 *cresc.* *p*



74 *agitato*

80 *a piacere* *pp* *a tempo* *f* *dim.*

85 *p* *allarg.* *pp*

## IV. Final

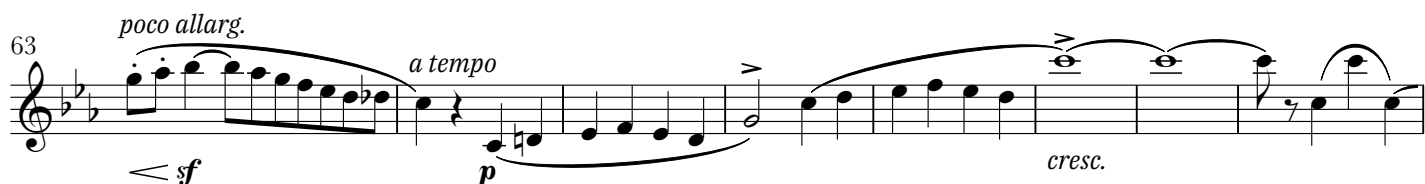
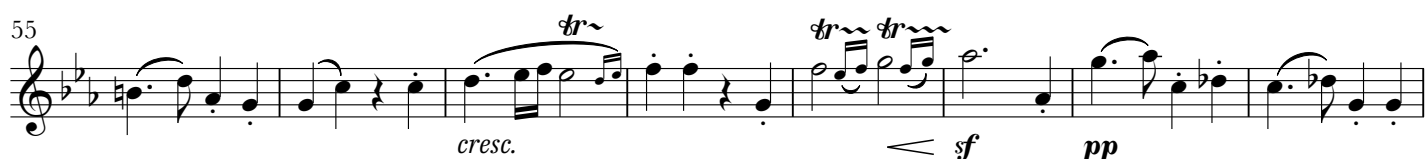
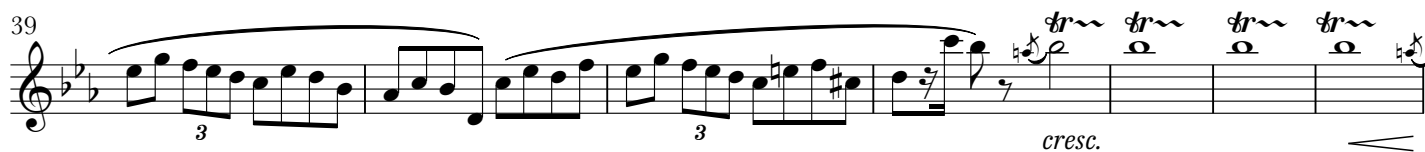
Vivace 3

10 *pp* *cresc.* *poco allarg.* *a tempo* *p*

18 *cresc.* *ff*

27 *p*

34 *p* *cresc.* *fp*



107

116 Flute *Poco a poco allarg.*

124 *tempo 1*

132

139

144

149 *8va*

156 (8) *a tempo*

162

*p* *cresc.* *p* *pp* *6* *6*

*cresc.* *pp* *cresc.*

*ff* *ff marcato*

*sf* *pp*

*ff* *3* *6* *sf* *a piacere* *dimin.*

*sf* *a piacere* *dimin.*

167 *p* *fp*

174 *cresc.* *sf* *fp* *cresc.* *sf* *p*

180 *poco a poco cresc.* *ff* *p*

187 *pp* *8va*

191 *cresc.* *sf* *pp*

195 *f* *8va*

199

Detailed description: This page contains seven staves of musical notation for a piano piece. The notation includes various musical symbols such as notes, rests, slurs, and dynamic markings. The key signature has two flats. The piece features complex rhythmic patterns, including triplets and sixteenth notes. Dynamics range from *pp* (pianissimo) to *ff* (fortissimo). There are also markings for *cresc.* (crescendo) and *poco a poco cresc.* (gradually increasing). An *8va* marking indicates an octave shift. The score is numbered 167 through 199.

202 *sf* *dim.* *p* *dim.*

206 *dim.* *pp*

210 *pp* *p* *cresc.*

(tr)

218 *ff* *allarg.* *a piacere* *poco a poco accel.*

223 *sf* *sf* *p*

228

232 *ff* *sf* *sf*

Detailed description: This page contains a musical score for Widor's Suite, Op. 34, measures 202 through 232. The score is written for a single melodic line on a treble clef staff. Measures 202-205 feature a series of eighth-note runs with dynamic markings *sf*, *dim.*, *p*, and *dim.*. Measures 206-209 continue with similar patterns, including a *pp* marking. Measure 210 includes a double bar line with a '2' above it, indicating a second ending. Measures 211-217 feature trills and tremolos, with dynamics *pp*, *p*, and *cresc.*. Measure 218 is marked with a trill symbol (tr) and includes a crescendo leading to *ff*, followed by *allarg.*, *a piacere*, and *poco a poco accel.*. Measures 219-222 show a melodic line with a *8va* marking above it. Measures 223-227 feature a series of eighth-note runs with dynamics *sf*, *sf*, and *p*. Measures 228-231 continue with similar patterns. Measure 232 ends with a final *ff* marking and a double bar line.